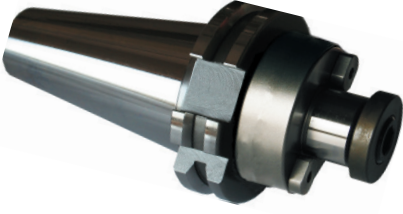
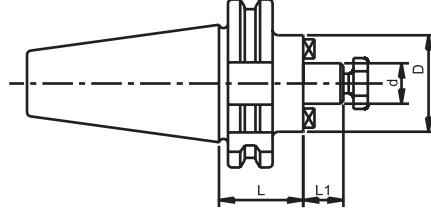


**SK TARAMA MALAFALARI - ALIN KAMALI**

**DIN 69871**



ALIN ÇİVATASI İLE BİRLİKTE  
TESLİM EDİLİR.



**ISO 3937**

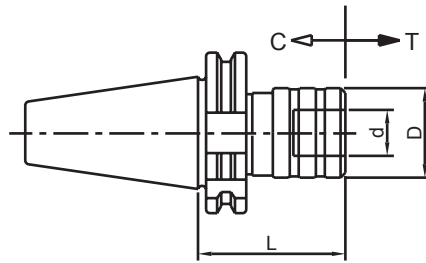
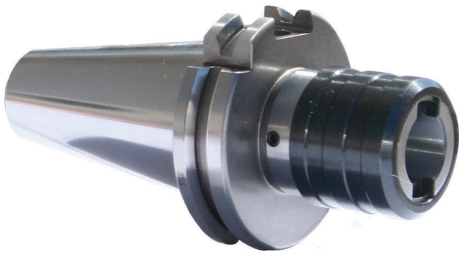
- MALZEME: 20 Mn Cr5
- SERTLİK:  $58 \pm 2$  HRc  
(Derinlik 0,6-0,9 mm)
- AÇI: DIN 7178-1/AT3  
DIN 2080-1/AT3
- SALGI: MAX. 0,006 mm

• İÇTEN SU VERME SİSTEMİ OPSİYONELDİR. (SİPARİŞ ÜZERİNE ÜRETİLİR)

SİP. NR.	KONİK	d (mm)	D (mm)	L (mm)	L1 (mm)	FİYAT KODU
SK40.16.T	SK40	16	40	40	17	00703
SK40.22.T	SK40	22	50	40	19	00704
SK40.27.T	SK40	27	60	40	21	00705
SK40.32.T	SK40	32	78	50	24	00706
SK40.40.T	SK40	40	88	50	27	00707
SK50.16.T	SK50	16	40	40	17	00708
SK50.22.T	SK50	22	50	40	19	00709
SK50.27.T	SK50	27	60	40	21	00710
SK50.32.T	SK50	32	78	50	24	00711
SK50.40.T	SK50	40	88	50	27	00712
SK50.50.T	SK50	50	118	60	30	00713

**SK KILAVUZ ÇEKME BAŞLIĞI - GİRİŞ VE ÇIKIŞ KOMPANZELİ**

**DIN 69871**



- MALZEME: 20 Mn Cr5
- SERTLİK:  $58 \pm 2$  HRc  
(Derinlik 0,6-0,9 mm)
- AÇI: DIN 7178-1/AT3  
DIN 2080-1/AT3

SİP. NR.	KONİK	KAPASİTE	d (mm)	D (mm)	L (mm)	C-T (mm)	FİYAT KODU
SK40.KCB.1	SK40	M3-M12	19	36,5	63	7,5-7,5	00714
SK40.KCB.2	SK40	M8-M20	31	54	97	12,5-12,5	00715
SK40.KCB.3	SK40	M14-M33	48	78	145	20-20	00716
SK50.KCB.1	SK50	M3-M12	19	36,5	60	7,5-7,5	00717
SK50.KCB.2	SK50	M8-M20	31	54	87	12,5-12,5	00718
SK50.KCB.3	SK50	M14-M33	48	78	145	20-20	00719