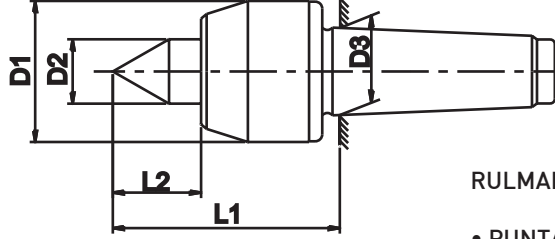


**DÖNER PUNTALAR - NORMAL UÇLU**

**TİP 100**



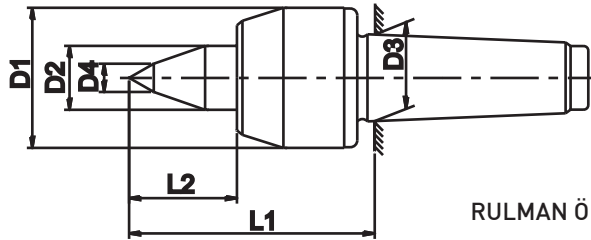
RULMAN ÖMRÜ 2000 İŞ SAATİDİR.

- PUNTA UCU SERTLİĞİ: 60-62 HRC
- SALGI: MAX. 0,008 mm

SİP. NR.	KONİK	D1 (mm)	D2 (mm)	D3 (mm)	L1 (mm)	L2 (mm)	DEVİR d/d (max)	PARÇA AĞIRLIĞI KG (max)	FİYAT KODU
102	MK2	45	20	17.780	65	24	6000	150	00941
103	MK3	60	25	23.825	83	31	4300	300	00942
104	MK4	70	32	31.267	102	40	3500	600	00943
105	MK5	90	40	44.399	129	50	2500	1100	00944
106	MK6	105	50	63.348	151	57	1900	2000	00945

**DÖNER PUNTALAR - KOPYE UÇLU**

**TİP 110**



RULMAN ÖMRÜ 2000 İŞ SAATİDİR.

- PUNTA UCU SERTLİĞİ 60-62 HRC
- SALGI: MAX. 0,008mm

SİP. NR.	KONİK	D1 (mm)	D2 (mm)	D3 (mm)	D4 (mm)	L1 (mm)	L2 (mm)	DEVİR d/d (max)	PARÇA AĞIRLIĞI KG (max)	FİYAT KODU
114	MK4	70	32	31.267	12	108	46	3500	450	00946
115	MK5	90	40	44.399	15	135	56	2500	850	00947