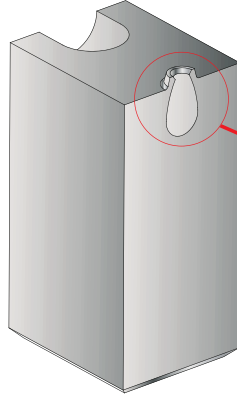


## KALIP ELEMENLARI

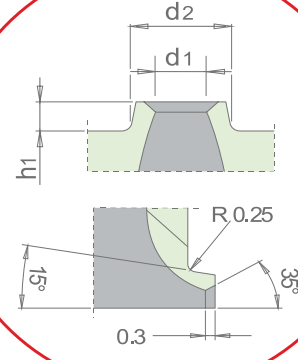
## KARE TİP MUZ YOLLUK SİSTEMİ



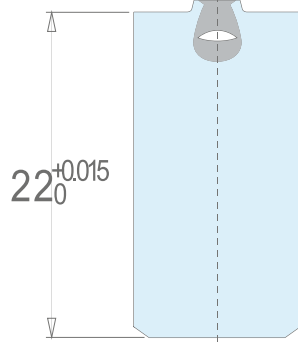
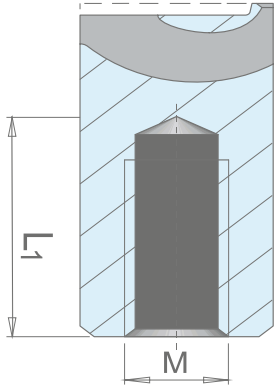
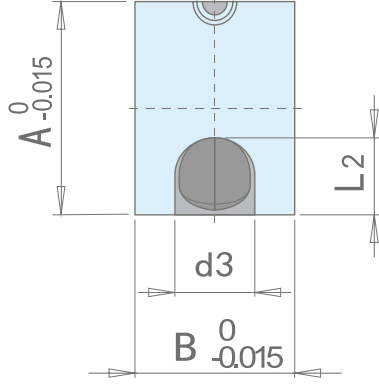
• Malzeme : 1.3343



Yüksek dayanıklı M2



Takkeli Model



Takkeli modelleri belirtir.

Sip. No.	A	B	d1	d2	d3	h1	L1	L2	M
HGS0806S2/S1	8	6	0.6	1.9	3	0.6	16	3.25	4
HGS0808S2/S1			0.8	2.1					
HGS1008S2/S1	10	8	0.8	2.2	4	0.8	15	4	5
HGS1010S2/S1			1.0	2.3					
HGS1012S2/S1			1.2	2.6					
HGS1014S2/S1			1.4	2.7					
HGS1016S2/S1			1.6	3.0					
HGS1208S2/S1	12	10	0.8	2.1	5	0.8	14	5	5
HGS1210S2/S1			1.0	2.3					
HGS1212S2/S1			1.2	2.6					
HGS1214S2/S1			1.4	2.7					
HGS1216S2/S1			1.6	3.0					
HGS1218S2/S1			1.8	3.1					
HGS1220S2/S1			2.0	3.4					
HGS1412S2/S1	14	12	1.2	2.5	6	0.8	13	6	6
HGS1414S2/S1			1.4	2.7					
HGS1416S2/S1			1.6	3.0					
HGS1418S2/S1			1.8	3.1					
HGS1420S2/S1			2.0	3.4					
HGS1422S2/S1			2.2	3.5					
HGS1424S2/S1			2.4	3.8					
HGS1428S2/S1			2.8	4.2					

## ÇİFT PLAKALI İTİCİ SİSTEM (DE)

DE 243648



- Çift Plakalı İtici Sistem: Bu ünite önceden belirlenen iki adımlı hareketi gerçekleştirir. Esnek iç maçalı kalıpla kademeli itmeyi elde etmek için çok kullanışlıdır.
- Önemli Montaj ölçülerini belirlemek için ilk kursu seçmede 0 - 30 mm cetvelini kullanınız.
- Malzeme: 1.7264 Sertleştirilmiş 52 ± 2HRC

