

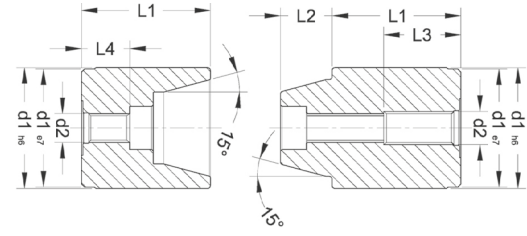
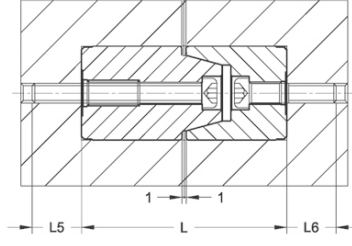
DELTA

D50

KONİK KİLİTLEME



- Malzeme : : Asil Çelik
1.7131 (16MnCr5)
- Sertlik : 62± 2 HRC
- Isıl İşlem : Sementasyon
DIN ISO 8406



Sip. No.	d1	L	L1	L2	L3	L4	L5	L6	d2
D50_12	12	34	16	4.5	9.6	8.6	8	7.5	M4
D50_14	14	34	16	6	12.4	6	7.5	8	M5
D50_16	16	34	16	6	12.4	5.8	7.5	8	M5
D50_20	20	54	26	9	19.7	10.6	12	9.5	M8

Sip. No.	d1	L	L1	L2	L3	L4	L5	L6	d2
D50_25	25	54	26	10	19.7	9.2	11	11	M8
D50_30	30	72	35	14	25	12.2	15	13	M10
D50_32	32	72	35	14	25	12.2	15	13	M10
D50_42	42	92	45	18	27	16.8	16	13	M10