

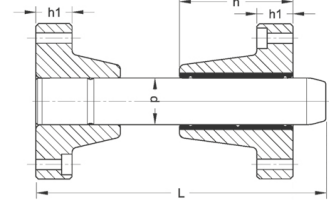
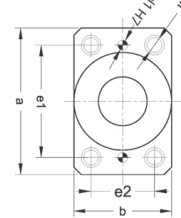
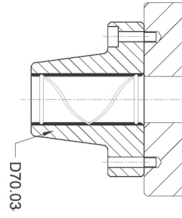
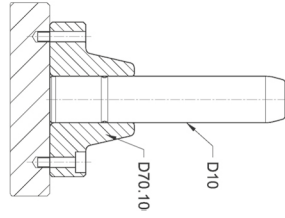
DELTA®

D70.031

## ÇELİK KAYMALI DÖKÜM SET



Ød	M
40	12
50	14
63	16
80	20



- Malzeme : GG25 / Asil Çelik 1.7131 (16MnCr5) / Asil Çelik 1.1213 (Cf 53) • Sertlik : 62± 2 HRC • Isıl İşlem : İndüksiyon / Sementasyon

Sip. No.	d	L	d1	h	h1	a	b	e1	e2
D70.031_40180	40	180							
220		220							
260		260	10	77	30	130	80	95	45
300		300							
355		355							
400		400							
D70.031_50200	50	200							
240		240							
280		280							
315		315	10	95	35	160	96	118	55
355		355							
400		400							
450		450							

Sip. No.	d	L	d1	h	h1	a	b	e1	e2
D70.031_63240	63	240							
280		280							
315		315	12	120	35	180	110	132	62
355		355							
400		400							
450		450							
D70.031_80240	80	240							
280		280							
315		315							
355		355	14	120	40	215	130	160	75
400		400							
450		450							
500		500							