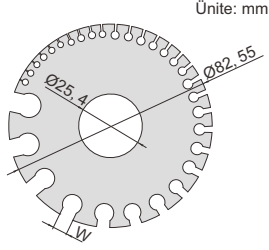


ABD STANDARDI SAC METAL MASTARI



4809

- Sac metal mastarı için, demir ve çelik levha
- HRC50-57'e göre sertleştirilmiştir

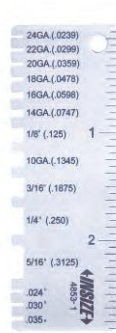
No,	W
0	7,938mm/0,3125"
1	7,144mm/0,2813"
2	6,747mm/0,2656"
3	6,350mm/0,2500"
4	5,953mm/0,2344"
5	5,556mm/0,2188"
6	5,159mm/0,2031"
7	4,763mm/0,1875"
8	4,366mm/0,1719"
9	3,969mm/0,1563"
10	3,572mm/0,1406"
11	3,175mm/0,1250"
12	2,778mm/0,1094"
13	2,381mm/0,0938"
14	1,984mm/0,0781"
15	1,786mm/0,0703"
16	1,588mm/0,0625"
17	1,429mm/0,0563"

No,	W
18	1,270mm/0,0500"
19	1,111mm/0,0438"
20	0,953mm/0,0375"
21	0,873mm/0,0344"
22	0,794mm/0,0313"
23	0,714mm/0,0281"
24	0,635mm/0,0250"
25	0,556mm/0,0219"
26	0,476mm/0,0188"
27	0,437mm/0,0172"
28	0,397mm/0,0156"
29	0,357mm/0,0141"
30	0,318mm/0,0125"
31	0,278mm/0,0109"
32	0,258mm/0,0102"
33	0,238mm/0,0094"
34	0,218mm/0,0086"
35	0,198mm/0,0078"
36	0,179mm/0,0070"

Kod	Ölçüm aralığı
4809	0-36 (7,938-0,179mm/0,3125-0,0070")

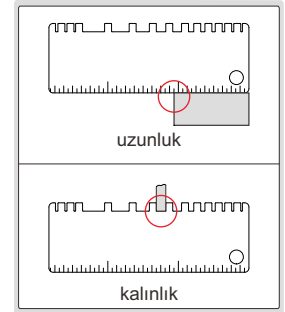
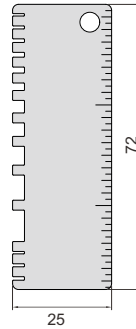
KALINLIK KOMPARATÖRÜ

- Paslanmaz çelikten imal edilmiştir



4853-1

Ünite: mm



Kod	Ölçüm	Ölçüm aralığı	Çözünürlük	Doğruluk
4853-1	uzunluk	0-2 3/4"	1/16"	1/32"
	kalınlık	24GA,(0,0239"); 22GA,(0,0299"); 20GA,(0,0359")	—	±0,002"
		18GA,(0,0478"); 16GA,(0,0598"); 14GA,(0,0747"); 1/8"(0,125"); 10GA,(0,1345"); 3/16"(0,1875"); 1/4"(0,250"); 5/16"(0,3125")		±0,004"
	0,024"; 0,030"; 0,035"		±0,002"	