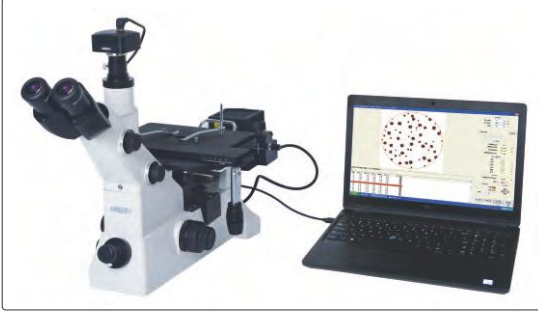


METALURJİK ANALİZ YAZILIMI VE KAMERA KOD ISM-MAS100

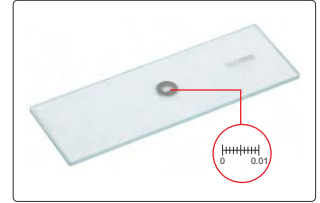
- 100'den fazla standart (ISO, ASTM, JIS, vb.)
- Metalurjik mikroskoplar için
- Kamera, mercek tüpüne veya mikroskopların kamera konektörüne yerleştirilebilir
- Çeşitli malzemelerin karşılaştırmalı analiz, ölçüm ve değerlendirmesini yapabilen metalurjik analiz yazılımı dahildir.



uygulama

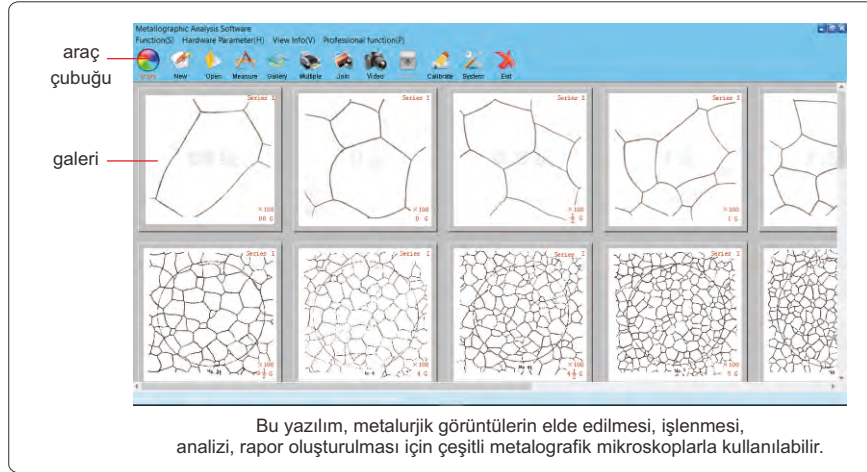


yazılım CD'si
(dahil)



cam kalibrasyon cetveli
(dahil, hassasiyet 0,01 mm)

metalurjik analiz yazılımı (dahil)

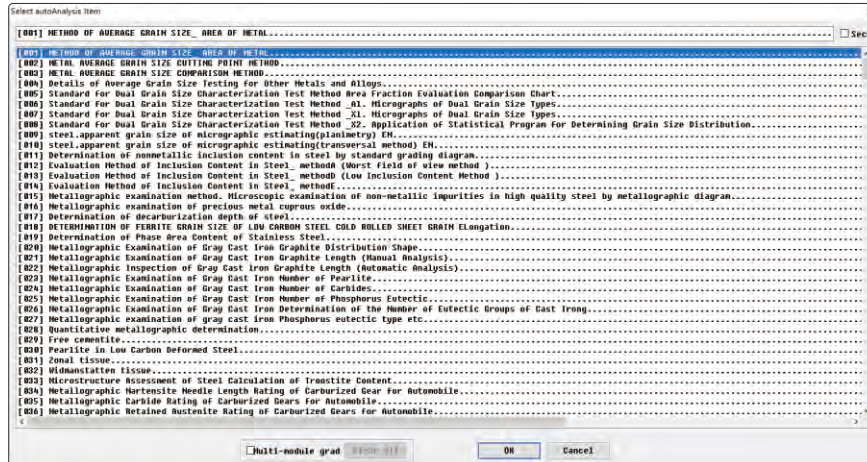


araç çubuğu

galeri

Bu yazılım, metalurjik görüntülerin elde edilmesi, işlenmesi, analizi, rapor oluşturulması için çeşitli metalografik mikroskoplarla kullanılabilir.

metalurjik modül listesi



Select autoAnalysis Item

[001] METHOD OF AVERAGE GRAIN SIZE AREA OF METAL.....

[002] METHOD OF AVERAGE GRAIN SIZE AREA OF METAL.....

[003] METAL AVERAGE GRAIN SIZE CUTTING POINT METHOD.....

[004] METAL AVERAGE GRAIN SIZE COMPARISON METHOD.....

[005] Details of Average Grain Size Testing for Other Metals and Alloys.....

[006] Standard for Dual Grain Size Characterization Test Method Area Fraction Evaluation Comparison Chart.....

[007] Standard for Dual Grain Size Characterization Test Method 31. Micrographs of Dual Grain Size Types.....

[008] Standard for Dual Grain Size Characterization Test Method 32. Application of Statistical Program for Determining Grain Size Distribution.....

[009] steel apparent grain size of micrographic estimating(planimetry) EN.....

[010] steel apparent grain size of micrographic estimating(transversal method) EN.....

[011] Determination of nonmetallic inclusion content in steel by standard grading diagram.....

[012] Evaluation Method of Inclusion Content in Steel_ methods (Worst field of view method).....

[013] Evaluation Method of Inclusion Content in Steel_ method (Low Inclusion Content Method).....

[014] Evaluation Method of Inclusion Content in Steel_ method.....

[015] Metallographic examination method. Microscopic examination of non-metallic inclusions in high quality steel by metallographic diagram.....

[016] Metallographic examination of precious metal cuprous oxide.....

[017] Determination of decarburization depth of steel.....

[018] DETERMINATION OF FERRITE GRAIN SIZE OF LOW CARBON STEEL COLD ROLLED SHEET (Normal Elongation).....

[019] Determination of Phase Area Content of Stainless Steel.....

[020] Metallographic Examination of Gray Cast Iron Graphite Distribution Shape.....

[021] Metallographic Examination of Gray Cast Iron Graphite Length (Manual Analysis).....

[022] Metallographic Inspection of Gray Cast Iron Number of Pearlite.....

[023] Metallographic Examination of Gray Cast Iron Number of Carbide.....

[024] Metallographic Examination of Gray Cast Iron Number of Phosphorus Eutectic.....

[025] Metallographic Examination of Gray Cast Iron Determination of the Number of Eutectic Groups of Cast Iron.....

[026] Metallographic Examination of Gray Cast Iron Phosphorus Eutectic type etc.....

[027] Metallographic examination of gray cast iron Phosphorus eutectic type etc.....

[028] Quantitative metallographic determination.....

[029] Free cementite.....

[030] Pearlite in Low Carbon Deformed Steel.....

[031] Zonal tissue.....

[032] Widmanstätten tissue.....

[033] Microstructure Assessment of Steel Calculation of Tränsitite Content.....

[034] Metallographic Martensite Needle Length Rating of Carburized Gear For Automobile.....

[035] Metallographic Carbide Rating of Carburized Gears for Automobile.....

[036] Metallographic Retained Austenite Rating of Carburized Gears for Automobile.....

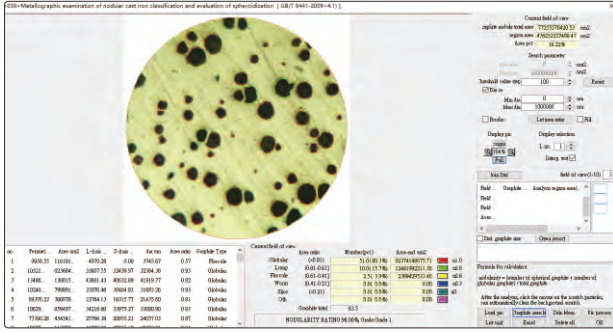
[Multi-module grad] [OK] [Cancel]

Devam ediyor

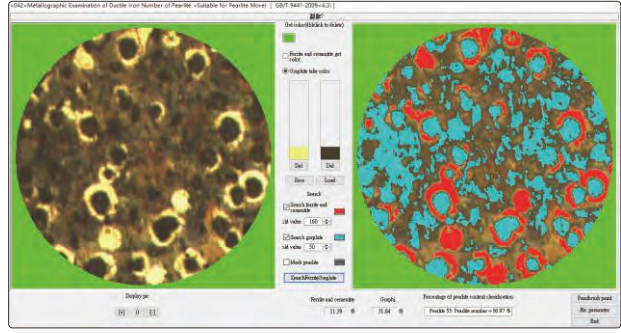
Önceki sayfanın devamı

metalurjik analiz örnekleri

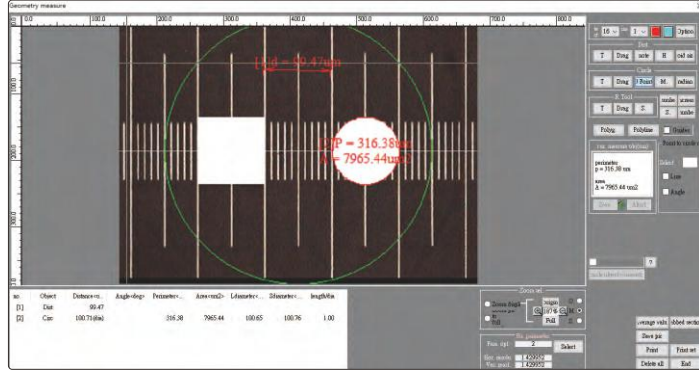
duktül dökme demir derecelendirmenin metalurjik analizi



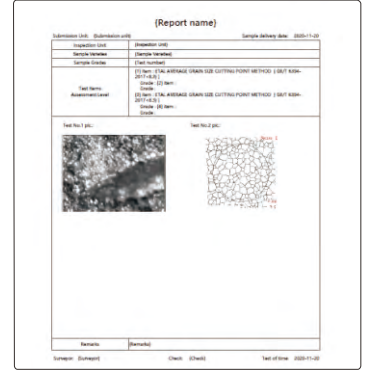
duktül dökme demir miktarının metalurjik analizi



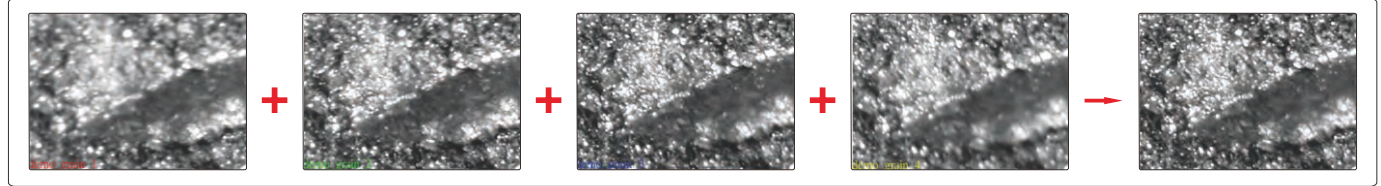
boyut ölçümü



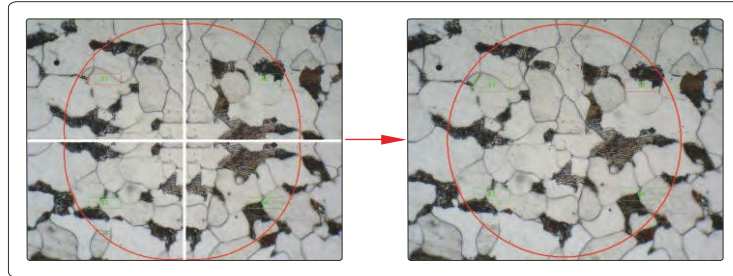
rapor



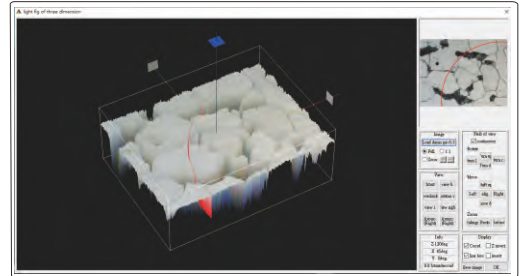
odak istifleme



görüntü



üç boyutlu harita



ÖZELLİK

Sensör	1/2" CMOS
Piksel	3M
Hassasiyet	2048x1536
Kare sayısı	6fps
Maruziyet	manuel veya otomatik, ayarlanabilir maruz kalma süresi
Güç kaynağı	USB girişi
Ağırlık	400g

STANDART TESLİMAT

Kamera (USB kablo dahil)	1 parça
Yazılım	1 parça
Cam kalibrasyon cetveli (dahil, hassasiyet 0,01 mm)	1 parça