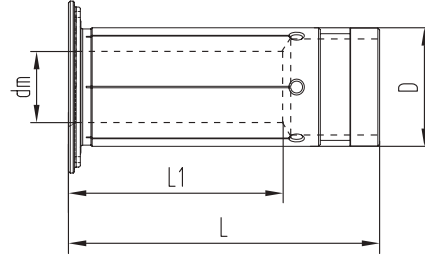


## JIS B6339 (MAS 403 BT)

### YEDEK PENS

- RADYAL SALGI DEĞERİ 5 $\mu$  ALTINDADIR
- h6 TOLERANSLI SİLİNDİRİK ŞAFTLI TAKIMLARI BAĞLAR

h6



SİP. NO.	MODEL	ÖLÇÜ (mm)				FİYAT EUR
		dm	D	L1	L	
100-01-001	HC12-3	3	12	16,5	47,5	
100-01-002	HC12-4	4	12	16,5	47,5	
100-01-003	HC12-5	5	12	16,5	47,5	
100-01-004	HC12-6	6	12	24	47,5	
100-01-005	HC12-8	8	12	25,5	47,5	
100-01-006	HC20-3	3	20	17,5	52,5	
100-01-007	HC20-4	4	20	17,5	52,5	
100-01-008	HC20-5	5	20	17,5	52,5	
100-01-009	HC20-6	6	20	25,5	52,5	
100-01-010	HC20-7	7	20	28	52,5	
100-01-011	HC20-8	8	20	28	52,5	
100-01-012	HC20-9	9	20	32,5	52,5	
100-01-013	HC20-10	10	20	32,5	52,5	
100-01-014	HC20-11	11	20	36	52,5	
100-01-015	HC20-12	12	20	36	52,5	
100-01-016	HC20-13	13	20	36,5	52,5	
100-01-017	HC20-14	14	20	37	52,5	
100-01-018	HC20-15	15	20	37	52,5	
100-01-019	HC20-16	16	20	37,5	52,5	
100-01-020	HC32-6	6	32	25,5	63,5	
100-01-021	HC32-8	8	32	27,5	63,5	
100-01-022	HC32-10	10	32	30,5	63,5	
100-01-023	HC32-12	12	32	30,5	63,5	
100-01-024	HC32-14	14	32	32,5	63,5	
100-01-025	HC32-16	16	32	40,5	63,5	
100-01-026	HC32-18	18	32	40,5	63,5	
100-01-027	HC32-20	20	32	40,5	63,5	
100-01-028	HC32-25	25	32	48,5	63,5	

### HİDROLİK TUTUCU SET

- HER SET GÜÇLÜ VE GÖSTERİŞLİ ALÜMİNYUM KUTUDA MUHAFAZA EDİLİR



SİP. NO.	İÇERİK			FİYAT EUR
	TUTUCU	PENS ÖLÇÜLERİ	ANAHTAR	
122-01-S04	BT40-HCM20-90	HC20-6, 8, 10, 12, 16 (iç çap : 6, 8, 10, 12, 16mm)	TS5	
122-01-S05	BT50-HCM20-90	HC20-6, 8, 10, 12, 16 (iç çap : 6, 8, 10, 12, 16mm)	TS5	
122-01-S06	BT50-HCM32-90	HC32-6, 8, 10, 12, 16, 20, 25 (iç çap : 6, 8, 10, 12, 16, 20, 25mm)	TS6	